



# ROVINNS

New Rovinns Gaia 2024





# DEAR ROVINNS FRIENDS

Feel the nature itself-enjoy every moment.  
The new 2024 ROVINNS GAIA brings the  
highest quality for your traveling adventures  
with the feeling of being at home  
wherever you are.

Functional layouts meet a stylish  
and cozy living ambience that leaves  
you wanting for nothing.

Discover our model, which reflect ROVINNS's  
signature strength and innovation. With GAIA,  
you will experience magical moments and  
collect memories that will last a lifetime.

All the bests,  
Your ROVINNS  
Team





Ö.KORHAN ŞİMŞEK  
Founder of  
Rovinns Caravan

## ABOUT US

Korhan Şimşek was born in 1992 and earned a Bachelor of Science in Production Systems and Industrial Engineering from Sabancı University in 2016 and a masters degree in 2019.

He worked as a Manufacturing Quality Engineer in the Engine, Body, and Exhaust divisions at Oyak Renault Factory until fulfilling his lifelong goal by launching Rovinns Caravan in 2020.

Rovinns wants to offer new and unforgettable experiences, much more than just designing caravans.

Rovinns produces 60 caravans a year in its 500 m2 production facility with an innovative structure and an experienced team.





# MISSION

## What we do

Rovinns' mission is to offer much more than just the design of caravans, but new and unforgettable experiences. With its innovative structure and experienced team, the company has a production capacity of 60 caravans per year in its 500 m2 production facility.

## What we aim

In line with our goal of continuous development, we aim to create added value in Turkey and to carry out our activities according to international standards with our principles of Quality, Customer Satisfaction and Sustainability and to create sustainable value worldwide.



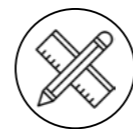
# ROVINNS GAIA

We began this journey with the greatest respect for Mother Earth that inspired us to name our first and rising star model "GAIA".





WHY  
CHOOSE  
ROVINNS?



UNIQUE



INNOVATIVE



QUALITY

A journey with a  
ROVINNS is an  
experience on a whole  
new level! Our model  
shines in ELEGANCE,  
QUALITY and  
COMFORT.





LIKE  
NATURE



### Safe

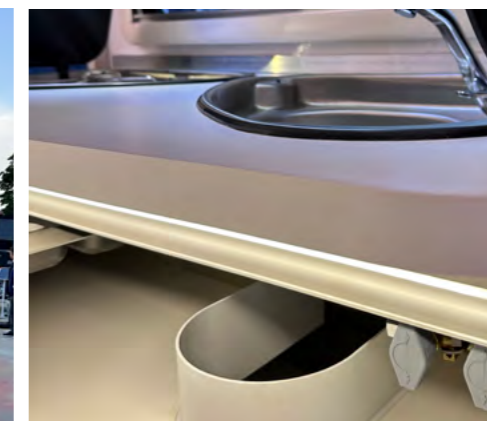
Gaia's safe and enjoyable handling is a result of a chassis designed in tandem with Knott engineers.

### Strong

GAIA is robust to its core with a sealed and insulated body thanks to its fireproof fiberglass monoblock construction.

### Elegant

Rovinns Gaia is instantly recognizable thanks to its sleek body form and hues that blend beautifully with nature.



### Back Loading Door

With functional back loading door, you can easily load your caravan and enjoy the beautiful view wherever you park it.

### Elegant Interior Design

The combination of milk and white reflects the pureness and quality of GAIA.



# STANDARDS ALL YOU NEED

Chassis  
Knott Chassis with trailing arm axle  
Knott Single Axle  
4 Stand legs with crank support  
5 bolt rim  
Handbrake  
Chassis 1,350 kg  
14" tires  
Safety clutch on stabilizer  
Hydraulic shock absorber

Materials / Vehicle Graphics  
Monocoque Body Shell  
GRP Sidewalls  
Foil graphics "ROVINNS" + silver powder-coated stripes

Windows / Roof Hoods / Ventilation  
Body door: with window and blind  
Gas locker with exterior hatch  
Windows with double glazing tinted, curtained and insect screened  
Hinged window 450 x 610 mm, kitchen  
Hinged window 600 x 900 mm front left  
Hinged window 600 x 900 mm rear left

Kitchen / Bathroom  
Thetford 3-burner hob with glass lid  
Sink  
Fridge 90 liters (compressor)  
Thetford Cassette Toilets

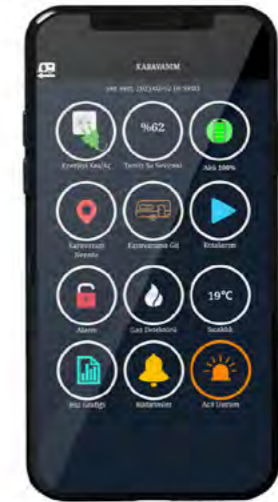
Heating / Gas Supply / Water Supply  
Gas heating / Whale  
Water supply with water pump  
Central waste pipe, external drainage under floor  
Fresh water tank 70 lt.  
Water heating (boiler) / Truma Therme 220v  
Gas regulator  
Fresh water filling point

Electrics / Safety  
Electrical connection plug to towing vehicle  
13 pin  
Interior lighting - all in 12 V version  
External socket for 230 V  
Circuit breaker with earth leakage protection  
230 V sockets  
Control panel

**Waranty**  
**10-year leak-proof guarantee**  
**(in every year service control)**

**CONTROL YOUR NECESSITIES  
WITH ONE HAND.**

**CARAVAN SMART SYSTEM**

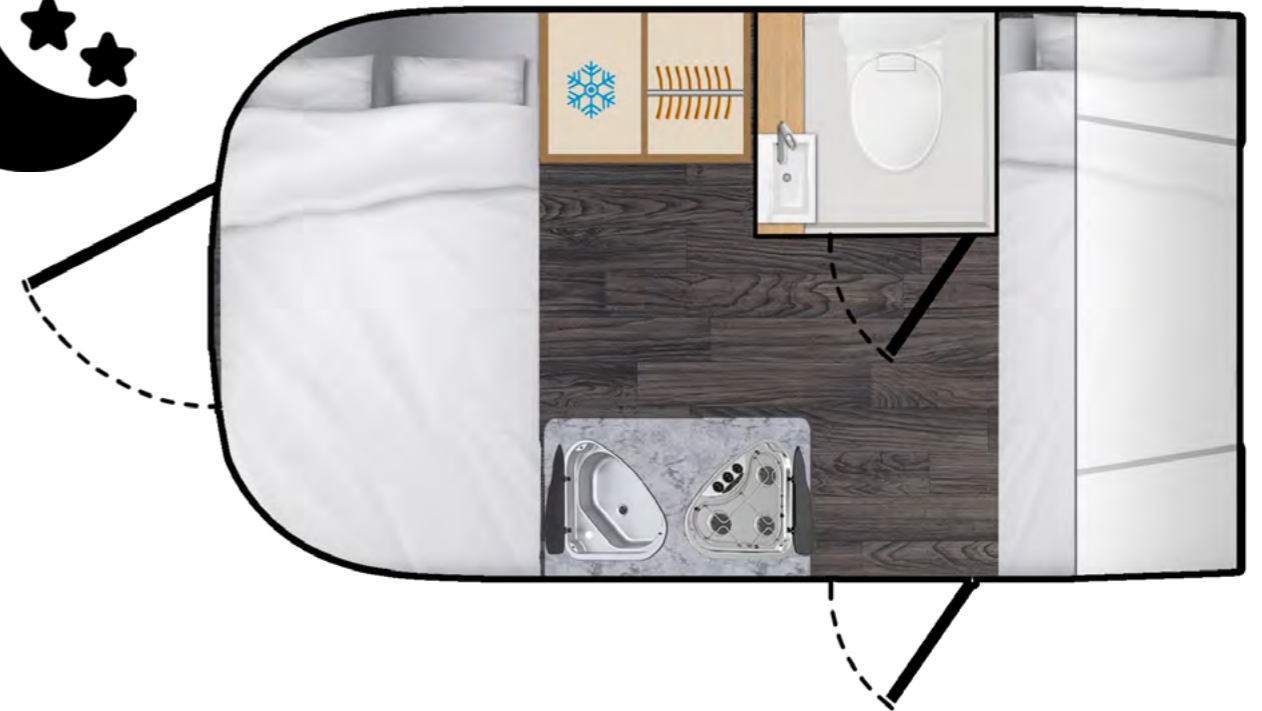
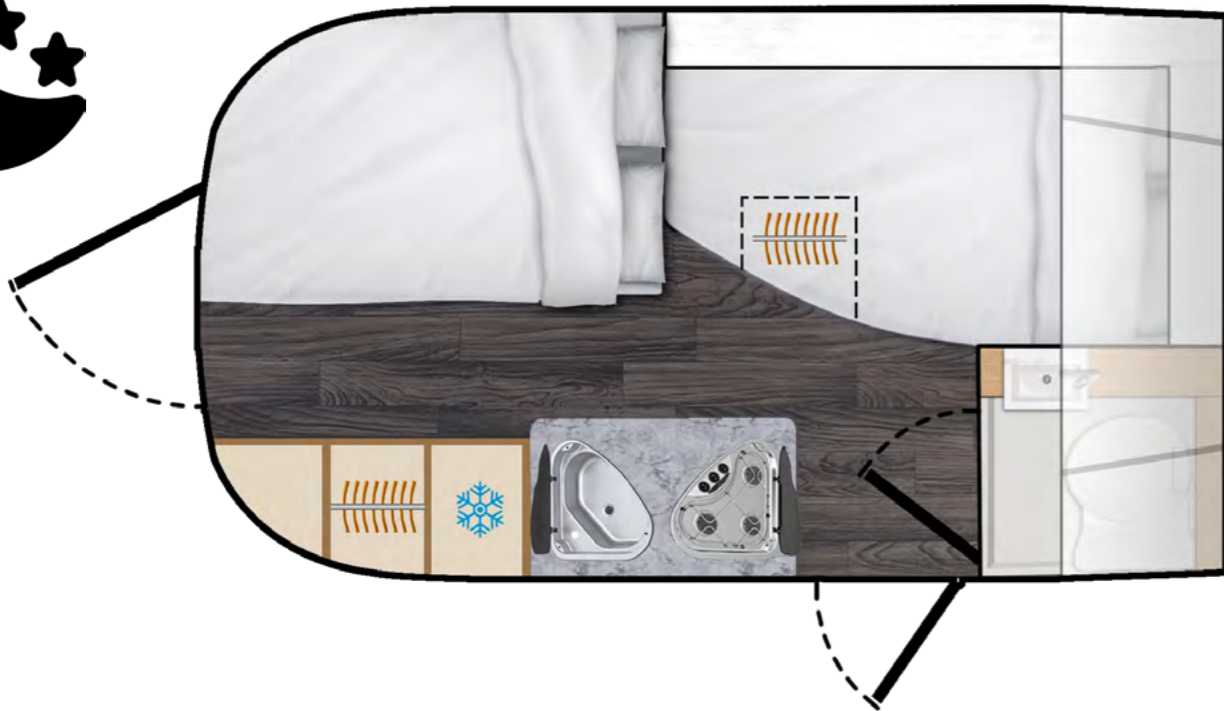
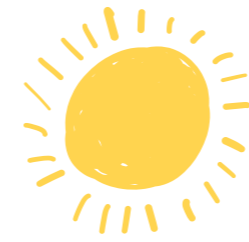
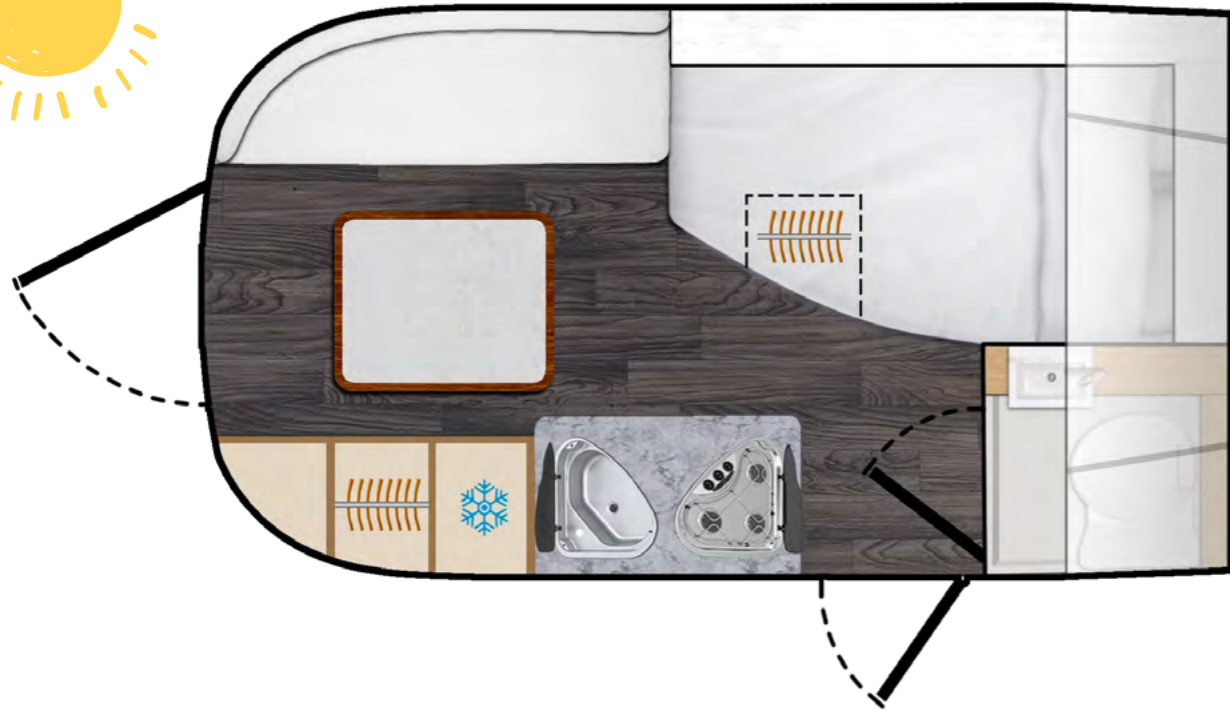
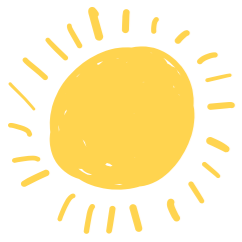


→ DOMETIC | Truma | KNOTT | THETFORD

# LAYOUTS

GAIA 424 LP

GAIA 424 BH

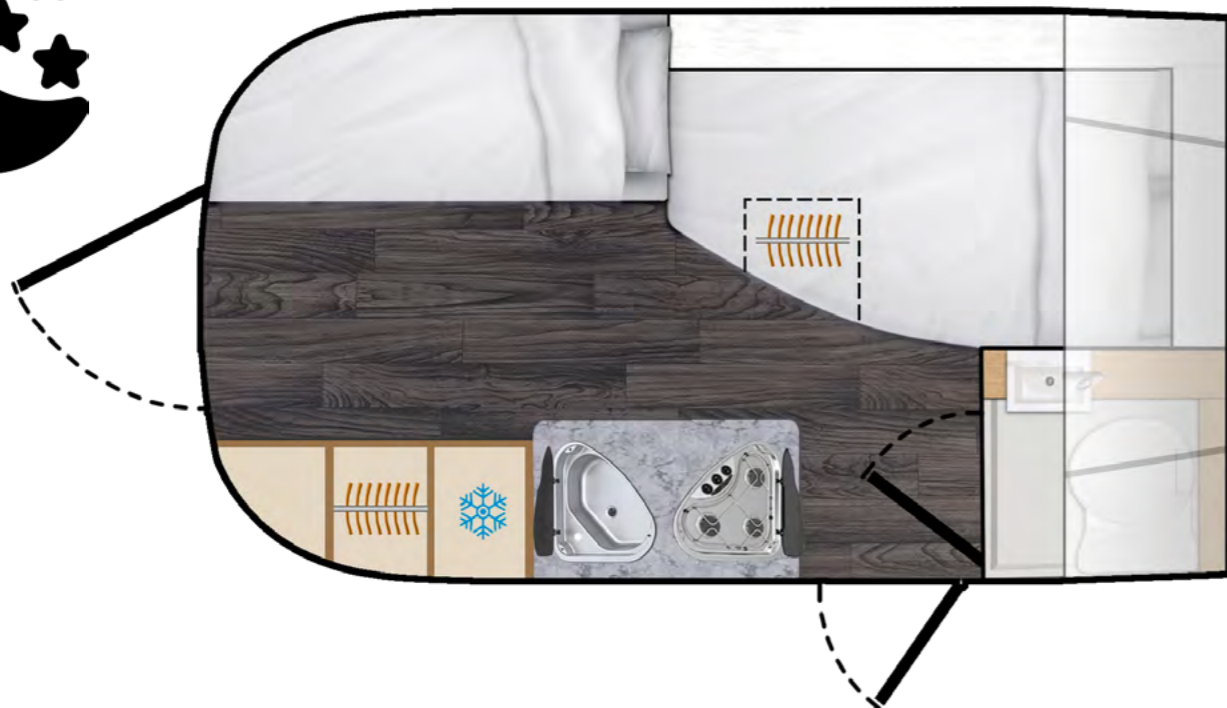
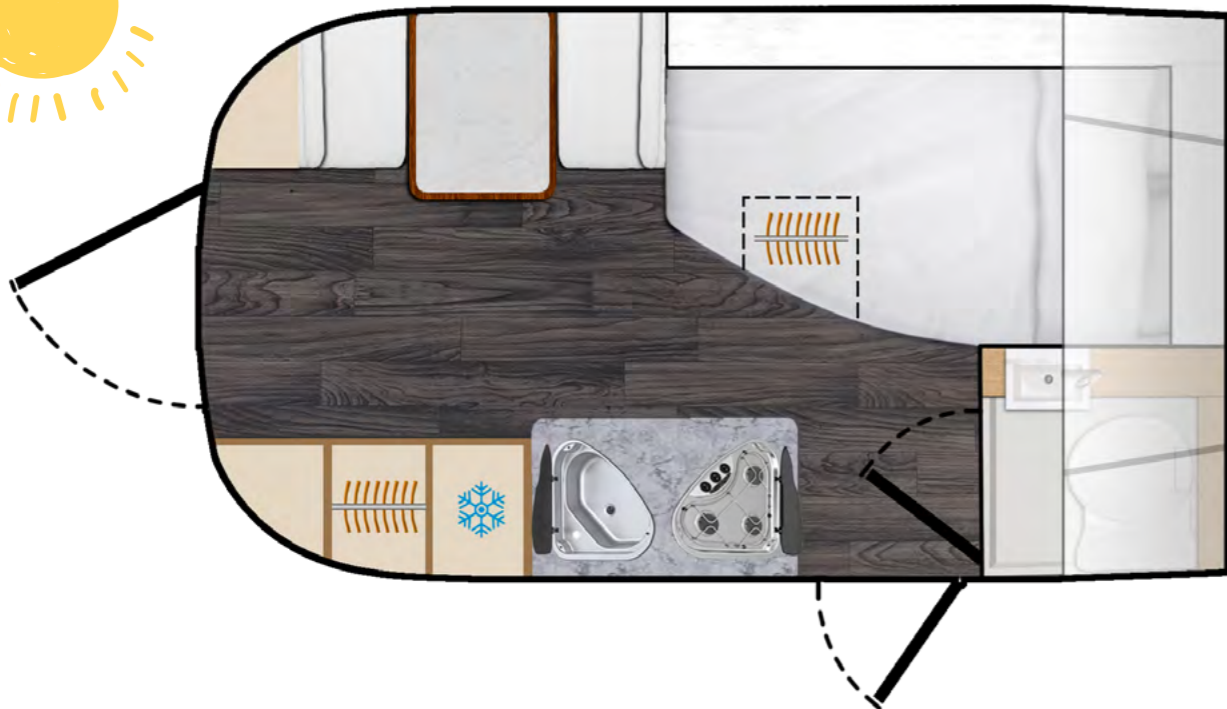
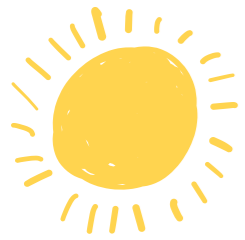




# LAYOUTS

## GAIA 424 SP

# TECHNICAL DATA



Total length incl. drawbar (cm)	570
Length/Usable length (cm)	432 / 424
Width (outer/inner) (cm)	220/216
Height (outer/inner) (cm)	257 / 195
Awning dimensions (cm)	260 x 200
Effective vehicle mass including legally required basic equipment (kg)	900
Technically maximum authorised laden mass (kg)	1350
Maximum payload (kg)	450
Tyre size	185/R14C - 185/65/R14
Rim size	5,5JX14'
Max. Berths Number	4
<b>Body</b>	
Total number of hinged windows	3
Body door (width x height) in mm	1754 mm x 580 mm
Wall thickness, roof (mm)	40 mm
Wall thickness, side wall (mm)	35 mm
Wall thickness, floor (mm)	45 mm
<b>Living Area</b>	
Bed size, front	1950 mm x 1300 mm
Bed size, couch	1810 mm x 600 mm
Bed size, converted couch	1810 mm x 1000 mm
<b>Water</b>	
Fresh water volume in liters	70
<b>Kitchen</b>	
Refrigerator (ltr.)	90
<b>Electrical Supply</b>	
Number of 230 V socket(s)	4
Number of USB socket(s)	-





# GAIA

*Standards*

*& Optionals*



## Standard Equipped

- 1-Thetford Triangular Three Burner Hob
- 2-Stainless Steel Sink and Tap
- 3-Thetford T2090 90 L 12 v Refregerator
- 4-500\*900 Windows with Curtains and Nets (2 pcs)
- 5-450\*610 Windows with Curtains and Nets (Kitchen)
- 6-Hartal Caravan Door
- 7-Gas Regulator
- 8-Whale 4 kw Heater (Gas)
- 9-Truma Therme Boiler (230 v Electric)
- 10-4.3 inch Digital Control Panel
- 11-Awning Light
- 12-230 v Electric Socket
- 13-Thetford C223-CS 18 Liter Cassette Toilet
- 14-Fiamma 70 Litre Fresh Water Tank
- 15-Fresh Water Filling Point
- 16-Comet Submerged Water Pump

## Optionals

- |   |        |
|---|--------|
| 1-High-Solarpanel (340 W)                       | € 569  |
| 2-Low-Solarpanel (205 W)                        | € 442  |
| 3-Allow Wheels                                  | € 750  |
| 4-Wifi & Rear Camera                            | € 350  |
| 5-Caravan Tent                                  | € 1015 |
| 6-22'' TV                                       | € 270  |
| 7-Antenna                                       | € 650  |
| 8-Antenna-Point                                 | € 110  |
| 9-ETS Plus Electrical Stabilizator              | € 825  |
| 10-Truma Mover Smart M                          | € 1150 |
| 11-Truma Aventa Compact Air Conditioner (230 V) | € 2025 |
| 12-Hartal Caravan Door Mosquito Net             | € 130  |
| 13-Rear Door with Mosquito Net                  | € 690  |
| 14-High-Solar Energy Package                    | € 1550 |
| 15-Low Solar Energy-Pacakage                    | € 1350 |
| 16-500*700 MPK Roof Hood                        | € 380  |
| 17-Gas-Tank                                     | € 50   |
| 18-Refilable Gas Tank                           | € 225  |
| 19-Service Door for Under Bed Storage           | € 95   |
| 20-Reading Lamps (2 Pcs)                        | € 90   |
| 21-Shower Set and Showe Curtain                 | € 205  |
| 22-BBQ-Point                                    | € 90   |
| 23- City Water                                  | € 200  |

**Standard Equipped Price 18750 €**

\*Installation is included in the price.





GAIA

*Comfort*



## Comfort Package

- 1-Thetford Triangular Three Burner Hob
- 2-Stainless Steel Sink and Tap
- 3-Thetford T2090 90 L 12 v Refregirator
- 4-500\*900 Windows with Curtains and Nets (3 pcs)
- 5-500\*700 MPK Roof Hood (1 pcs)
- 6-Hartal Caravan Door
- 7-Rear Door with Insect Net
- 8-4.3 inch Digital Control Panel
- 9-Awning Light
- 10-230 v Electric Socket
- 11-100 Ah Battery
- 12-1000 Watt Inverter
- 13-20 Ah Battery Charger
- 14-Transfer Switch 230 v Seperator
- 15-1,5 m Electric Supply Cable
- 16-Thetford C223-CS 18 Liter Cassette Toilet
- 17-Fiamma 70 Litre Fresh Water Tank
- 18-Fresh Water Filling Point
- 19-Fiamma 10 Liter Filtered Water Pump
- 20-Reich Outdoor Shower with Water Pump Switch
- 21-City Water

- 22-Shower Set
- 23-280\*280 Vent Roof Hood (Washroom)
- 24-Gas Regulator
- 25-Whale 4 kw Heater (Gas)
- 26-Truma Therme Boiler (230 v Electric)
- 27-Thule 4200 Awning (260\*200)
- 28-Rovinns Couplin Cover
- 29-Knott Big Foot
- 30-Knott Couplin Lock

## Standard Chassis Equipment

- 1- Knott KS25 Stabilizer Drawbar
- 2-Knott Shock Absorbers
- 3-Chassis Cover
- 4-1350 Kg Axe

**Price Exc VAT 21950 €**





GAIA

*Luxury*



## Luxury Package

- 1-Thetford Triangular Three Burner Hob
- 2-Thetford Triangular Sink and Foldable Tap
- 3-Thetford T2090 90 L 12 v Refregirator
- 4-Thetford 420 Gas Oven
- 5-500\*900 Windows with Curtains and Nets (3 pcs)
- 6-450\*610 Bedside Window with Curtains and Nets (1 pcs)
- 7-500\*700 MPK Roof Hood (2 pcs)
- 8-Hartal Caravan Door
- 9-Rear Door with Insect Net
- 10-Under Bed Service Door
- 11-7 inch Digital Control Panel
- 12-Bedhead Reading Lamps (2 pcs)
- 13-Awning Light
- 14-230 v Electric Socket
- 15-150 Ah Battery
- 16-1000 Watt Inverter
- 17-20 Ah Battery Charger
- 18-Transfer Switch 230 v Seperator
- 19- 1,5 m Electric Supply Cable
- 20-Thetford C223-CS 18 Liter Cassette Toilet
- 21-Fiamma 70 Litre Fresh Water Tank

- 22-Fresh Water Filling Point
- 23-Fiamma 10 Liter Filtered Water Pump
- 24-Reich Outdoor Shower with Water Pump Switch
- 25-City Water
- 26-Shower Set and Curtain
- 27-280\*280 Vent Roof Hood (Washroom)
- 28-Truma Mono Gas Regulator
- 29-BBQ Point
- 30-Whale 4 kw Heater (Gas)
- 31-Truma B10 Boiler (Gas)
- 32-Thule 4200 Awning (260\*200)
- 33-Rovinns Couplin Cover
- 34-Knott Big Foot
- 35-Knott Couplin Lock

## Standard Chassis Equipment

- 1- Knott KS25 Stabilizer Drawbar
- 2-Knott Shock Absorbers
- 3-Chassis Cover
- 4-1350 Kg Axe

**Price Exc VAT 24500 €**





GAIA

*Premium*



## Premium Package

- 1-Thetford Triangular Three Burner Hob
- 2-Thetford Triangular Sink and Foldable Tap
- 3-Thetford T2138 138 L 12 v Refregirator
- 4-Thetford 420 Gas Oven
- 5-500\*900 Windows with Curtains and Nets (3 pcs)
- 6-450\*610 Bedside Window with Curtains and Nets (1 pcs)
- 7-500\*700 MPK Roof Hood (2 pcs)
- 8-Hartal Caravan Door
- 9-Rear Door with Insect Net
- 10-Under Bed Service Door
- 11-7 inch Digital Control Panel
- 12-Bedhead Reading Lamps (2 pcs)
- 13-Smart Caravan System
- 14-Awning Light
- 15-230 v Electric Socket
- 16-150 Ah Lithium Battery
- 17-1000 Watt Inverter
- 18-20 Ah Battery Charger
- 19-Transfer Switch 230 v Seperator
- 20- 1,5 m Electric Supply Cable
- 21-Thetford C223-CS 18 Liter Cassette Toilet

- 22-Fiamma 70 Litre Fresh Water Tank
- 23-Fresh Water Filling Point
- 24-Fiamma 10 Liter Filtered Water Pump
- 25-Reich Outdoor Shower with Water Pump Switch
- 26-City Water
- 27-Shower Set and Curtain
- 28-280\*280 Vent Roof Hood (Washroom)
- 29-Truma Duo Gas Regulator
- 30-BBQ Point
- 31-Truma Combi 4 (Gas)
- 32-Thule 4200 Awning (300\*250)
- 33-Rovinns Couplin Cover
- 34-Knott Big Foot
- 35-Knott Couplin Lock

## Standard Chassis Equipment

- 1- Knott KS25 Stabilizer Drawbar
- 2-Knott Shock Absorbers
- 3-Chassis Cover
- 4-1350 Kg Axe

**Price Exc VAT 27150 €**





# ENJOY BEING IN THE NATURE

If you want to break away from the stresses of modern living, come welcome the joys of freedom. Rovinns offers a mobile, minimalist way of living for you to explore nature with style and comfort. Now, embrace the limitless life force of green and blue, because with Rovinns the world is yours.





Phone: +90 507 873 73 63 E-mail: info@rovinns.com  
Address: Üçevler Mahallesi, 66.(220) Sokak, Küçük Sanayi Nilüfer  
Ticaret Merkezi No: 5/1 Nilüfer / BURSA TÜRKİYE

---

 rovinns caravan  www.rovinns.com